



## uVision™ 365 SERIES NDT Inspection Lamps

The uVision™ 365 Series is Spectroline's innovative line of compact, broad-beam, handheld NDT lamps.

These lightweight, yet rugged lamps boast an IP65 rating, making them dust-tight and water-resistant. Using a state-of-the-art heat sink, the uVision™ is mechanically cooled without the need for fans. In addition to the three powerful UV-A (365 nm) LEDs, it has a convenient white light LED for illuminating work areas.

Compliant versions have embedded microprocessors to keep lamps within specifications. There are multiple power-source options as well.

**NEW!**

### INTRODUCING THE **Z-MODEL**

with In-Handle  
Lithium-Ion Battery



**COMPLIANT  
MODELS  
AVAILABLE**



**MEETS  
EN ISO 3059  
SPECIFICATIONS**



**DUST-TIGHT &  
WATER RESISTANT**



**WIDE, EVEN  
BEAM PROFILE**



**FANLESS &  
COOL RUNNING**



**BASE  
IN-LINE  
A/C CORD**



**M-MODEL  
EXTERNAL  
BATTERY PACK**

**NEW!**

**Z-MODEL  
IN-HANDLE  
BATTERY**



**R-MODEL  
REEL WITH  
50-FOOT CORD**

**NEW!**

# INTRODUCING THE Z-MODEL

**RUGGED. RELIABLE. CORDLESS.**



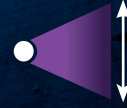
**COMPLIANT  
MODELS  
AVAILABLE**



**MEETS  
EN ISO 3059  
SPECIFICATIONS**



**IP65 RATING**  
Dust-Tight &  
Water Resistant



**WIDE, EVEN  
BEAM PROFILE**



**FANLESS &  
COOL RUNNING**

**3 UV-A LEDs**  
For wide area of coverage

**LONG-LASTING  
UV-A LENSES**  
Reduce the rate of solarization

**Faceplate with  
INTEGRAL UV-A  
PASS FILTERS**  
Reduce visible wavelengths  
(SBLC- & HC-Models only)

**SEALED  
CONTROL SWITCH**  
Grip-mounted,  
three-way rocker switch  
(white light/off/UV)

**ADJUSTABLE  
WHITE LIGHT LED**  
Use to locate  
surface flaws

**POWER/BATTERY  
LIFE LIGHT**  
Indicates power level

**THERMAL CUT-OFF  
CIRCUITRY**  
Prevents lamp from going out of compliance when internal temperature exceeds specifications  
(SBLC-Models only)

**FANLESS DESIGN**  
Maintains optimum lamp temperature using state-of-the-art heat sinks

**PISTOL GRIP**  
Comfortable,  
balanced control

**NEW!**  
**IN-HANDLE LITHIUM  
ION BATTERY**  
(Z-Models only)  
Available in multiple  
power sources



BACK VIEW





### BASE MODEL

Lamp with in-line AC power supply, UV-absorbing spectacles, comes in a protective case.

uVision™ 365:

**UV-365EH or UV-365ES**

uVision™ 365 DELUXE:

**UV-365SBLC or UV-365HC**



**NEW!**

### Z-MODEL

Lamp with in-handle lithium battery, in-line AC charger and cord, UV-absorbing spectacles, comes in a protective case.

uVision™ 365:

**UV-365ZEH**

uVision™ 365 DELUXE:

**UV-365ZSBLC or UV-365ZHC**



### M-MODEL

Lamp with battery pack with 12V rechargeable NiMH battery, in-line AC power supply, UV-absorbing spectacles, comes in a protective case.

uVision™ 365:

**UV-365MEH**

uVision™ 365 DELUXE:

**UV-365MSBLC or UV-365MHC**



### R-MODEL

Lamp on a reel with 50 ft retracting A/C power cord, hooks to suspend from ceiling, UV-absorbing spectacles.

uVision™ 365 DELUXE:

**UV-365SBLCR or UV-365HCR**

		UV-365SBLC*	UV-365HC	UV-365ZHC	UV-365ES	UV-365EH	UV-365ZEH
TESTED TO COMPLY WITH	<b>Rolls-Royce RRES 90061 REQUIREMENTS</b>	✓	✗	✗	✗	✗	✗
	<b>ASTM E3022-18 STANDARD</b>	✓	✓	✓	✗	✗	✗
	<b>EN ISO 3059</b>	✓	✓	✓	✓	✓	✓
<b>Nominal Steady-State UV-A Intensity at 15 in (38 cm) Ⓞ</b>		< 5,000 μW/cm²	6,000 μW/cm²	8,000 μW/cm²	< 5,000 μW/cm²	7,000 μW/cm²	9,000 μW/cm²
<b>UV-A Coverage Area at 15 in (38 cm) at minimum 1,200 μW/cm²</b>		6 in (15.2 cm) Diameter	6.4 in (16.3 cm) Diameter	7.5 in (19 cm) Diameter	6 in (15.2 cm) Diameter	7 in (17.8 cm) Diameter	7 in (17.8 cm) Diameter
<b>Filter/Faceplate</b>		Integral UV-A pass filters			Standard faceplate		
<b>Thermal Cut-Off Circuitry</b>		✓	✗	✓	✗		
<b>Visible Light Measurement</b>		< 1 foot-candles (11 lux)			< 2 foot-candles (22 lux)		
<b>In-Handle Lithium-Ion Battery</b>		<b>UV-365ZSBLC</b>	✗	✓	✗	✗	✓
<b>External Battery Pack</b>		<b>UV-365MSBLC</b>	<b>UV-365MHC</b>	✗	✗	<b>UV-365MEH</b>	✗
<b>Reel Kit (50 ft power cord)</b>		<b>UV-365SBLCR</b>	<b>UV-365HCR</b>	✗	✗	✗	✗

\*These versions are adjusted to ensure that they provide a maximum steady-state UV-A intensity of less than 5,000 μW/cm² at 15 in (38 cm)

Ⓞ UV-A intensity reading taken with the Spectrolite® AccuMAX™ Series meter, and is factory set to the value shown.

Each lamp is fitted with an 8-foot cord and the appropriate plug for the country of destination. Also available in 20-foot cord models.



<b>Light Source:</b>	(3) UV-A LEDs, (1) white light LED
<b>Lamp Style:</b>	Pistol grip
<b>Lamp Head Diameter:</b>	3.5 in (9 cm)
<b>Height:</b>	7.5 in (19 cm) Z-Model: 9.5 in (24.1 cm)
<b>Width:</b>	3.5 in (8.9 cm) Z-Model: 3.75 in (9.5 cm)
<b>Weight:</b>	1.9 lb (0.90 kg) Z-Model: 2.65 lb (1.2 kg)
<b>White Light LED Intensity:</b>	400 foot-candles (4,306 lux)
<b>Power Requirements:</b>	100-120VAC / 12VDC*

**In-Handle Lithium Ion Battery:** Type: 14.8V, Lithium ion (rechargeable)  
Run time: ZSBLC: 10 hours | ZHC: 7 hours | ZEH: 8 hours  
Charge time: 4 hours

**External Battery Pack:** Type: 12V, NiMH (rechargeable)  
Run time: 3.5 hours continuous  
Charge time: 2 hours

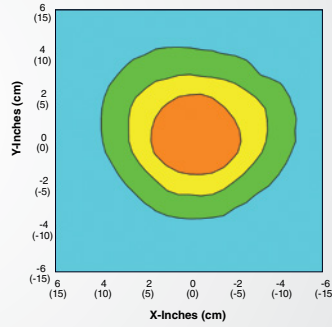
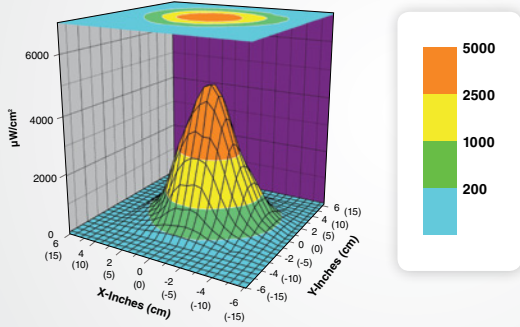
\*(Also available in 220-240V versions)

# STANDARD-INTENSITY MODELS:

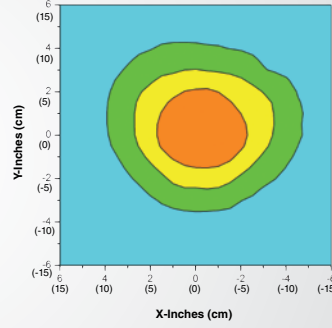
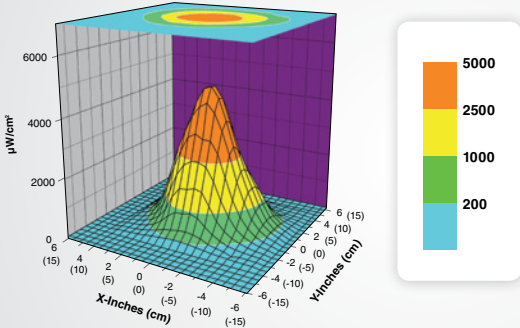
Surface Contour Profile at 15 in (38 cm)

Top Intensity Profile at 15 in (38 cm)

## UV-365SBLC MODELS



## UV-365ES MODELS

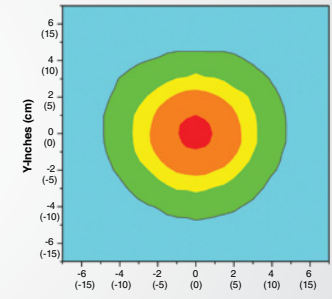
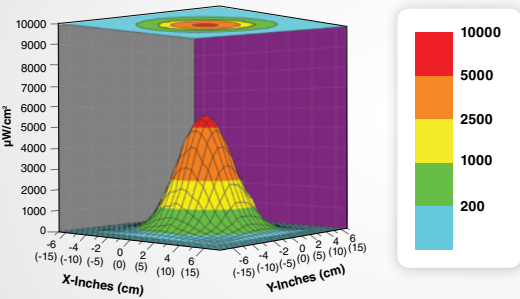


# HIGH-INTENSITY MODELS:

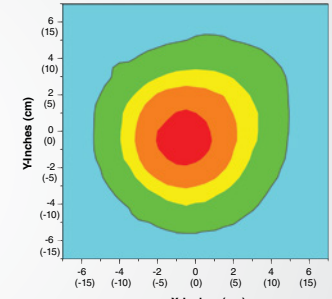
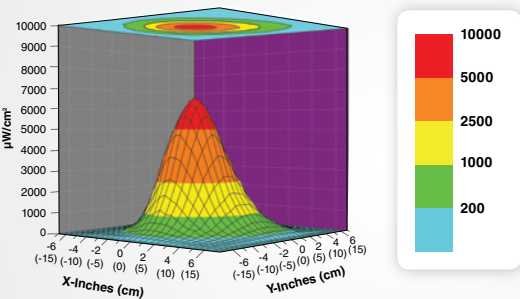
Surface Contour Profile at 15 in (38 cm)

Top Intensity Profile at 15 in (38 cm)

## UV-365HC MODELS



## UV-365EH MODELS



# APPROPRIATE DOCUMENTS PROVIDED WITH EACH LAMP



**SPECTROLINE**  
VALIDATION REPORT

MODEL NUMBER OR STANDARD	MANUFACTURE PART NUMBER	MODEL NUMBER	PART NUMBER
UV-365SBLC	UV-365SBLC	UV-365SBLC	UV-365SBLC
UV-365ES	UV-365ES	UV-365ES	UV-365ES
UV-365HC	UV-365HC	UV-365HC	UV-365HC
UV-365EH	UV-365EH	UV-365EH	UV-365EH

**TEST DESCRIPTIONS**

TEST DESCRIPTION	PARAMETERS	TEST METHOD	UNIT TEST
Uniformity Testing	UV-365SBLC	UV-365SBLC	UV-365SBLC
Intensity Testing	UV-365SBLC	UV-365SBLC	UV-365SBLC
Beam Spread	UV-365SBLC	UV-365SBLC	UV-365SBLC
Peak Wavelength	UV-365SBLC	UV-365SBLC	UV-365SBLC
UV-365SBLC	UV-365SBLC	UV-365SBLC	UV-365SBLC
UV-365ES	UV-365ES	UV-365ES	UV-365ES
UV-365HC	UV-365HC	UV-365HC	UV-365HC
UV-365EH	UV-365EH	UV-365EH	UV-365EH

**Knowledge Gain**

Knowledge Gain	Model UV-365SBLC	Model UV-365ES	Model UV-365HC	Model UV-365EH
Uniformity Testing	UV-365SBLC	UV-365ES	UV-365HC	UV-365EH
Intensity Testing	UV-365SBLC	UV-365ES	UV-365HC	UV-365EH
Beam Spread	UV-365SBLC	UV-365ES	UV-365HC	UV-365EH
Peak Wavelength	UV-365SBLC	UV-365ES	UV-365HC	UV-365EH

**Output Stability**

Output Stability	UV-365SBLC	UV-365ES	UV-365HC	UV-365EH
UV-365SBLC	UV-365SBLC	UV-365ES	UV-365HC	UV-365EH
UV-365ES	UV-365SBLC	UV-365ES	UV-365HC	UV-365EH
UV-365HC	UV-365SBLC	UV-365ES	UV-365HC	UV-365EH
UV-365EH	UV-365SBLC	UV-365ES	UV-365HC	UV-365EH

**Insulation Temperature**

Insulation Temperature	UV-365SBLC	UV-365ES	UV-365HC	UV-365EH
UV-365SBLC	UV-365SBLC	UV-365ES	UV-365HC	UV-365EH
UV-365ES	UV-365SBLC	UV-365ES	UV-365HC	UV-365EH
UV-365HC	UV-365SBLC	UV-365ES	UV-365HC	UV-365EH
UV-365EH	UV-365SBLC	UV-365ES	UV-365HC	UV-365EH

**Notes:**

1. This document is a copy of the original report and is not a substitute for the original report. The original report is available on the Spectroline website at [www.spectro-uv.com](http://www.spectro-uv.com).  
 2. The information provided in this report is for informational purposes only. The information provided in this report is not intended to be used as a substitute for the original report. The information provided in this report is not intended to be used as a substitute for the original report.

**Inspector:** \_\_\_\_\_  
**Date:** \_\_\_\_\_

© 2010 Spectro-UV • Model UV-365SBLC • [www.spectro-uv.com](http://www.spectro-uv.com)



**SPECTROLINE**  
CERTIFICATE OF CONFORMANCE

**MODEL NUMBER:** \_\_\_\_\_  
**PART NUMBER:** \_\_\_\_\_

APPLICABLE TO	MANUFACTURE PART NUMBER	MODEL NUMBER
UV-365SBLC	UV-365SBLC	UV-365SBLC
UV-365ES	UV-365ES	UV-365ES
UV-365HC	UV-365HC	UV-365HC
UV-365EH	UV-365EH	UV-365EH

**LAMP ACCEPTANCE TESTS**

TEST DESCRIPTION	PARAMETERS	TEST METHOD	UNIT TEST
Uniformity Testing	UV-365SBLC	UV-365SBLC	UV-365SBLC
Intensity Testing	UV-365SBLC	UV-365SBLC	UV-365SBLC
Beam Spread	UV-365SBLC	UV-365SBLC	UV-365SBLC
Peak Wavelength	UV-365SBLC	UV-365SBLC	UV-365SBLC
UV-365SBLC	UV-365SBLC	UV-365SBLC	UV-365SBLC
UV-365ES	UV-365ES	UV-365ES	UV-365ES
UV-365HC	UV-365HC	UV-365HC	UV-365HC
UV-365EH	UV-365EH	UV-365EH	UV-365EH

**Notes:**

1. This document is a copy of the original report and is not a substitute for the original report. The original report is available on the Spectroline website at [www.spectro-uv.com](http://www.spectro-uv.com).  
 2. The information provided in this report is for informational purposes only. The information provided in this report is not intended to be used as a substitute for the original report. The information provided in this report is not intended to be used as a substitute for the original report.

**Inspector:** \_\_\_\_\_  
**Date:** \_\_\_\_\_

© 2010 Spectro-UV • Model UV-365SBLC • [www.spectro-uv.com](http://www.spectro-uv.com)



**SPECTROLINE**  
CERTIFICATE OF LIGHT OUTPUT

This is to certify the lamp manufactured from Model UV-365HC lamp output measurement (intensity and stability) for UV-A light producing a Peak Wavelength at 365 - 370 nm (365 ± 5 nm) as measured with a Spectroradiometer.

**Product Name:** UV-365HC Standard Intensity UV-A Lamp  
**Product Number:** UV-365HC  
**Serial Number:** \_\_\_\_\_  
**Manufacturer:** [www.spectro-uv.com](http://www.spectro-uv.com)  
**Model:** UV-365HC and UV-365HC-01 at 15" (38 cm)

UV-A Intensity reading at 305 mm: \_\_\_\_\_  
 Visible Light reading at 355 mm: \_\_\_\_\_

**Inspector:** \_\_\_\_\_  
**Date:** \_\_\_\_\_

© 2010 Spectro-UV • [www.spectro-uv.com](http://www.spectro-uv.com)